

SPECIAL DISTRICT PUBLIC DISCLOSURE DOCUMENT

SECOND CREEK FARM METROPOLITAN DISTRICT NO. 3

As required pursuant to Section 32-1-104.8 of the Colorado Revised Statutes (“**C.R.S.**”), this Public Disclosure Document has been prepared by Second Creek Farm Metropolitan District No. 3 (the “**District**”) to provide information regarding the District.

DISTRICT’S POWERS

The powers of the District as authorized by Section 32-1-1004, C.R.S. and under its Service Plan, as approved by the City of Commerce City (“**City**”) on September 19, 2005, are to provide for the design, acquisition, construction, installation, perpetual maintenance, and financing of certain street, water, nonpotable water, sanitation, safety protection, park and recreation, transportation, television relay and translation facilities, erosion control, and mosquito control improvements and services within and without the boundaries of the District.

DISTRICT’S SERVICE PLAN

The District’s Service Plan, which can be amended from time to time, includes a description of the District’s powers and authority. A copy of the District’s Service Plan is available from the Division of Local Government in the State Department of Local Affairs (“**Division**”).

The Second Creek Farm Metropolitan District No. 3 is authorized by Title 32 of the Colorado Revised Statutes to use a number of methods to raise revenues for capital needs and general operations costs. These methods, subject to the limitations imposed by Section 20 of Article X of the Colorado Constitution (“**TABOR**”), include issuing debt, levying taxes, and imposing fees and charges. Information concerning District directors, management, meetings, elections, and current taxes are provided annually in the Notice to Electors described in Section 32-1-809(1), C.R.S., which can be found at the District office, on file at the Division, or on file at the office of the Clerk and Recorder of Adams County.

DISTRICT MAP

A map of the District’s boundaries is attached hereto as Exhibit A.

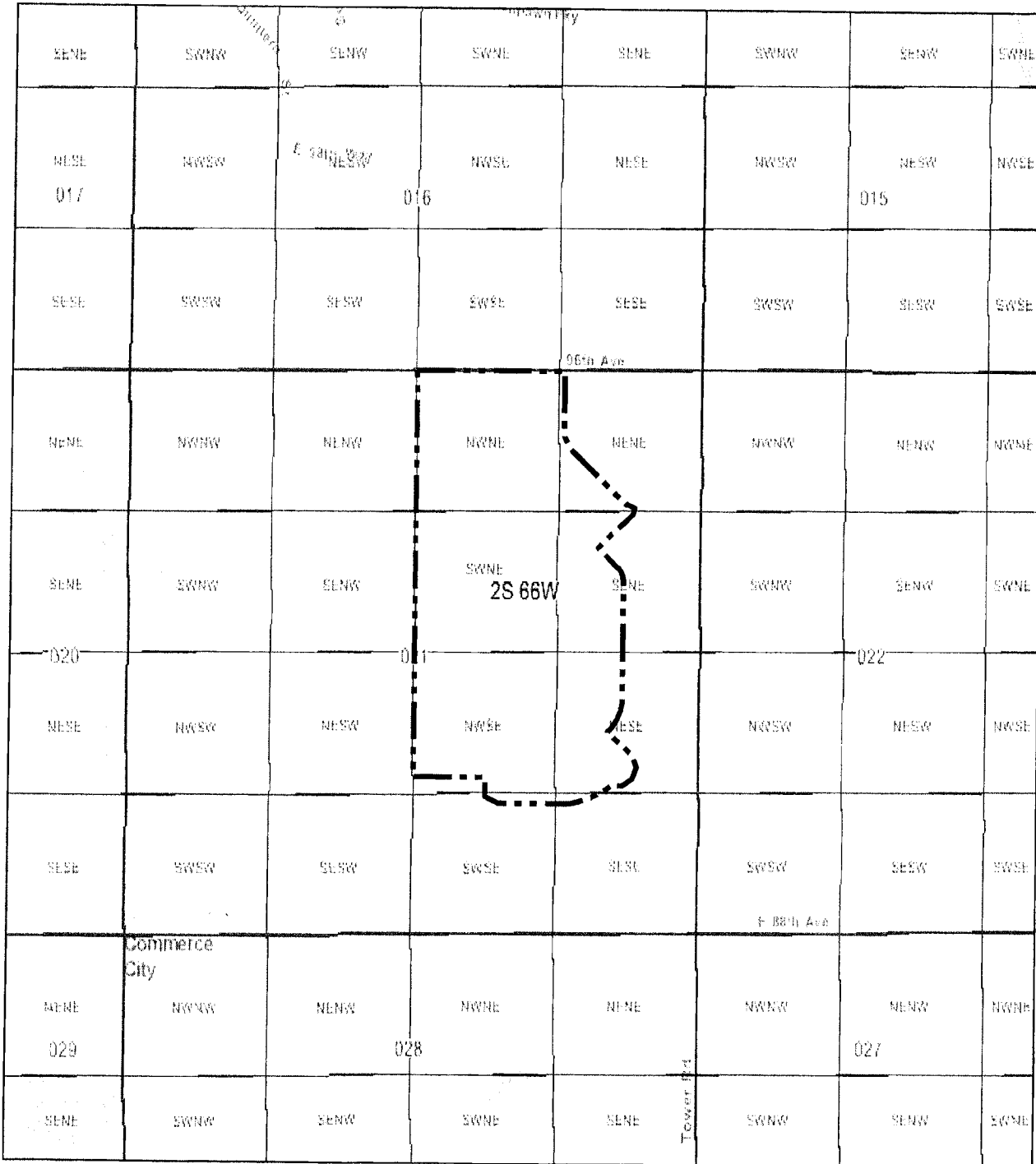
Dated this 22nd day of December, 2014.

EXHIBIT A

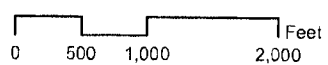
District Map

Second Creek Farm Metro. District No. 3

December 17, 2009



Legal Description:
 65622_SECOND3_O_020306
 65622_SECOND3_E_080306
 65622_SECOND3_I_040306



NOLTE
ENGINEERS ARCHITECTS